



Striking the right balance; tough, reliable, rugged.



Split-Top Grapple Rake

The attachment that started it all, the Split-Top grapple rake is designed for use on tractor front loaders as well as skid steers (without a cab door). Available in two widths, 62" and 77", these units feature two upper grapples working independent of each other, allowing the unit to retain uneven loads. The lower tines with their replaceable wear points allows the grapple to pick up brush, logs, orchard pruning, brush piles and other debris while leaving the dirt behind — letting the operator get more work done.

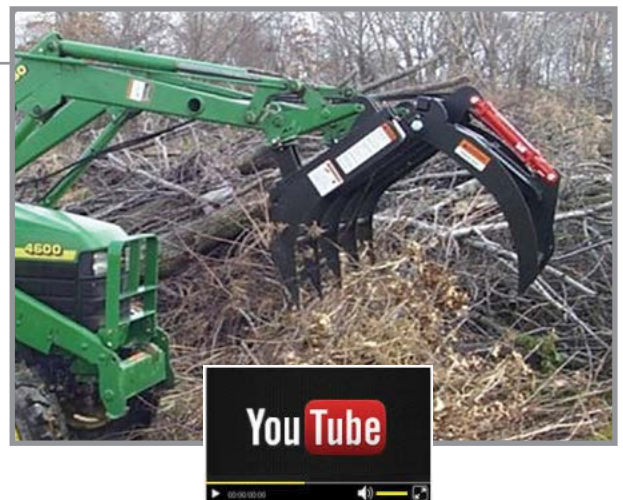
- Unique tine design with weld-on tine points.
- Tine design allows operator to go under logs/brush for easy clean pick up.
- Interfacing quick-attach brackets available for most tractor loader models including John Deere, AGCO, CNH, Bush Hog and others.
- Greaseable pivot points on upper clamps for long service life.
- Shield plate in upper clamps provides protection to hydraulic cylinders.



Compact Grapple Rake

Designed for compact tractors up to 50 horsepower that are equipped with a front loader. This 60-inch wide grapple allows the acreage owner unsurpassed versatility in clearing brush, piling limbs or orchard maintenance. Ideal for loading limbs, orchard prunings, piling brush and other hard to handle materials.

- Unique upper grapple design of 3/8" steel provides clamping force to hold material securely.
- Design allows brush and other materials to be picked up while leaving the dirt.
- Size compatible with the lift capacity of most small loader tractors.
- Lower tines of 5/8" steel feature weld-on tine points, for easy, clean debris pick-up.
- Pivot points have lubrication capabilities.
- Tractor remote hydraulic ports are required to operate the grapple.
- Tractor front loader model allows use of standard pin-on bracket or select interfacing quick attach brackets for John Deere, AGCO, CNH, Kubota and other brands.



See the Compact Grapple Rake in action on YouTube!
(<https://www.youtube.com/watch?v=tHsD02jmEPE>)

Split-Top Grapple Rake Specifications

	FLGR-262 / SSGR-262 / FLGR-262-G	FLGR-277 / SSGR-277 / FLGR-277-G
Overall Width (in/mm)	62 / 1575	77 / 1956
Overall Depth (in/mm)	25 / 635	25 / 635
Overall Height Closed (in/mm)	54 / 1372	54 / 1372
Grapple Opening (in/mm)	50 / 1270	50 / 1270
Upper Grapple Widths (in/mm)	19.25 / 489	19.25 / 489
Tine Spacing (in/mm)	15 / 381	15 / 381
Number of Tines/Grapples (lower/upper)	5 / 4	6 / 4
Reinforcing Tubes Between Lower Tines	Yes	Yes
Number of Hydraulic Cylinders	2	2
Cylinder Bore (in/mm)	2 / 51	2 / 51
Cylinder Stroke (in/mm)	10 / 254	10 / 254
Cylinder Rod Diameter (in/mm)	1.125 / 29	1.125 / 29
Cylinder Pressure Rating (psi/bar)	3000 / 206.9	3000 / 206.9
Mounting for Tractor Loader (FLGR)	Mgt. Brt. Available*	Mgt. Brt. Available*
Weight FLGR Model (lbs/kg)	811 / 368	884 / 401
Mounting for Skid Steer (SSGR)	"Universal" Skid Steer	"Universal" Skid Steer
Weight SSGR Model (lbs/kg)	812 / 368	943 / 428
Mounting for FLGR-G Models	Euro / Global	Euro / Global
Weight FLGR-G Models (lbs/kg)	827 / 375	970 / 440
Horsepower Rating (maximum)	95 PTO HP	150 PTO HP
Product No. FLGR Models (loader)	811380	811400
Product No. SSGR Models (skid steer)	811435	811440
Product No. FLGR-G Models (Euro/Global)	811495	811490

*Optional interfacing quick attach brackets available for most popular loaders. (Skid Steer/Global models have mounting brackets incorporated into their design).



WARNING: Read and understand the operator's manual before operation. Be sure tractor/skid steer is properly counterbalanced. Damage to equipment or personal injury could occur.

Compact Grapple Rake Specifications – Designed for tractors up to 50 HP only

	FLGR-4062	FLGR-4062S
Overall Width (in/mm)	60 / 1524	60 / 1524
Overall Depth (in/mm)	23 / 584	23 / 584
Overall Height Closed (in/mm)	38.77 / 984	38.77 / 984
Grapple Opening (in/mm)	27 / 686	27 / 686
Upper Grapple Widths (in/mm)	34 / 837	34 / 837
Tine Spacing (in/mm)	15 / 381	15 / 381
Number of Lower Tines	5	5
Reinforcing Tubes Between Lower Tines	Yes	Yes
Number of Hydraulic Cylinders	1	1
Cylinder Bore (in/mm)	2 / 50.8	2 / 50.8
Cylinder Stroke (in/mm)	8 / 203	8 / 203
Cylinder Rod Diameter (in/mm)	1.125 / 29	1.125 / 29
Cylinder Pressure Rating (psi/bar)	3000 / 207	3000 / 207
Mounting for Tractor Loader (FLGR)	Mgt. Brt. Available *	"Universal" Skid Steer
Weight FLGR Model (lbs/kg)	359 / 180.98	364 / 180.98
Product No. FLGR Models (loader)	811460	811480

*Optional interfacing quick attach brackets available for most popular loaders.



WARNING: Read and understand the operator's manual before operation. Be sure tractor/skid steer is properly counterbalanced. Damage to equipment or personal injury could occur.

Choose **WORKSAVER** For All Your Material Handling