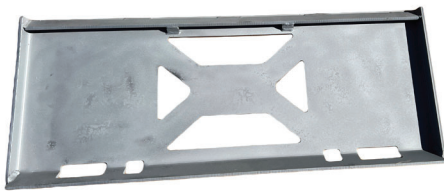


RANKIN

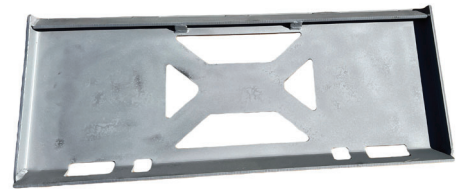
SKID STEER MOUNT



SSWM-100



SSWM-200



SSWM-300

MODELS	DUTY	THICKNESS	LENGTH	WIDTH	WEIGHT
SSWM-100	Light	8 mm	45 ¾ "	18 ¼ "	53 lbs.
SSWM-200	Medium	8 mm	45 ¾ "	18 ¼ "	77 lbs.
SSWM-300	Heavy	10 mm	45 ¾ "	18 ¼ "	94 lbs.

Unpainted ready to weld onto your attachment to convert it to a skid style coupler, compatible with Skid Steers featuring the Universal Quick Attach Mounting System and tractors with the Skid Steer Style Quick Attach

Specifications subject to change without notice

Innovative, Rugged & Labor Saving Attachments

www.rankinequipment.com

September 2024